



# The Dragon Scoop

## January 2023

St. George Episcopal Church  
1024 SE Cass Avenue Roseburg, OR 97470  
541-673-4048

**Mission Statement:**  
“Loving God, Loving Our  
Neighbors”

The Episcopal Church Welcomes You



## The Gifts of God



**for the People of God.**

**Christmas Eve, 2022**

# Pastor Gail's Ponderings . . . .

## Epiphany—Navigating by GPS

*“In the time of King Herod, after Jesus was born in Bethlehem of Judea, wise men from the East came to Jerusalem, asking, ‘Where is the child who has been born king of the Jews, for we observed his star at its rising and have come to pay him homage.’ . . . . When they had heard the king, they set out; and there, ahead of them, went the star that they had seen at its rising, until it stopped over the place where the child was. When they saw that the star had stopped they were overwhelmed with joy. On entering the house, they saw the child with Mary, his mother; and they knelt down and paid him homage. Then, opening their treasure chests, they offered him gifts of gold, frankincense, and myrrh.”*

Matthew 2:1-2 and 10-11

It was their willingness to ponder the expanse of the heavens that made them wise. Under the panorama of the night sky, they contemplated dark and light, movement and mystery. It all meant something--they were sure of it. But what message did the dark heavens hide? You see, in Jesus’ church, we sometimes do our work by starlight.

The Wise Men, foreigners from the East in the story of Jesus’ birth, found their way to the Messiah by following a mysterious light that guided them through unfamiliar territory. They navigated by **GPS—God’s Peculiar Star.** It was a

surprising, uncommon, traveling star. It appeared out of nowhere, but somehow they knew it was a sign from God. It led them to a peculiar place where they found a peculiar scene: a humble child in a home with his mother, Mary.



This child, Jesus, was King of the universe, son of God, Prince of Peace and savior of the world. The Bible tells us that they were “overwhelmed with joy” as they bowed to worship him.

All of us who put our faith in the Triune God are servants of God. We allow ourselves to be guided by God’s mysterious starlight through unfamiliar territory to the places where Christ is revealed. As we move through the darkness of uncertainty, or conflict, or puzzling change, we know that we are headed in the right direction as long as we follow God’s light. The manger and the cross are not treasures in the eyes of the world, yet **in God’s grace we know that these peculiar gifts come to us bearing eternal life.**

God’s guiding starlight is still everywhere in the church and the world. It glistens in the waters of Baptism, illuminates the bread and the wine of the Eucharist, and shines over places of poverty and hopelessness where Jesus lives among the poor. By this light, miracles happen, wounds are healed, the hungry are fed, prayers are answered, leaders are raised up, and reconciliation overcomes animosity. We can feel the joy grow as we find our way closer and closer to the places where God calls us to be the light of Christ. Even though we are sometimes frightened and uncertain as we set out to follow this peculiar light, the overwhelming joy at the end of the journey assures us that it is God who has brought us to this place.

*God of Grace, we thank you for starlight and peculiar destinations. Guide us by your mysterious light to the places where you want us to serve. Give us the courage to travel in unfamiliar territory, the wisdom to recognize your light and joy at the end of our journey.*

Amen.

Pastor  
Gail



## In Memoriam

*Margaret Josephine Krewson*

*August 31, 1916 — December 7, 2022*



A Celebration of Life for parishioner Margaret Krewson was held at St. George's on Dec. 23 with Pastor Gail Duba presiding. Myana Clark and Janet Mecham provided music.



# Episcopal Church Women

## by Betty Jo Hoffman

### ECW Christmas Meeting:

Thank you to Kathy Glockner for hosting us this year with great food, fellowship, and an informal meeting.

We voted to give monetary gifts to the hardworking staff at our church and donations to Doctors Without Borders and Roseburg Dream Center.

Thelma's thought for the day was "Let us love the world to peace." Isn't that what we all want and need to do?

Happy New Year!



Jewell Gates (above) and Thelma Sayers (right) sit on Santa's lap at Kathy Glockner's house. They have both been very good and deserve lots of presents this year!

Kathy's tree demonstrates that she may be the biggest Oregon State Beavers fan ever.



**Thelma's Thought  
for the Day**

**Let us love  
the world to  
peace.**

*All photos by Pastor Gail Duba*

## Blessings



*Photo by Karla Roady*

Birthday Blessings for  
Pete Benham



*Photo by Pete Bernham*

Birthday Blessings for  
Frank Graham



*Photo by Karla Roady*

Birthday Blessings for  
Nancy Baum (left) and Jewell Gates (center)



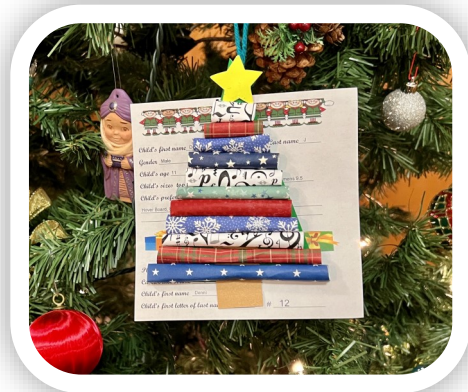
*Photo by Karla Roady*

2nd Anniversary Blessings for  
Aaron and Elizabeth Heinrich

## Parish News



**Southern Oregon Convocation** met at St. George's on Dec. 3. Representatives discussed the importance of meeting to express our congregations' desires to make a difference in the lives of our communities.



The **Christmas Giving Tree** had 22 names on it this year. The photos below show only a few of the generous gifts given by parishioners.

Mik Carlson made the wonderful gift tags for the tree!



## Pastor Gail's 20th Ordination Anniversary



*thank you*

Pastor Gail would like to thank everyone who brought the delicious food for the 20th anniversary of her ordination potluck. It was wonderful. She would also like to thank the ECW for the generous check. Pastor Gail and David would also like to thank the parish for the many gifts and cards.



Above: It was Jewell Gates's birthday celebration too!

Delicious birthday and ordination anniversary cakes were made by Karla Roady.



## Advent and Christmas Music



Dec. 12 was the **Fourth Sunday of Advent**. Betty Jo Hoffman lights the fourth candle here as the congregation sings:

*Light four candles to watch  
for Messiah:  
let the light banish darkness.  
He is coming, tell the glad  
tidings.  
Let your lights be shining.*

The words are from “Light One Candle to Watch for Messiah.” Lyrics are by Wayne L. Wold set to a Yiddish folk tune. Pastor Gail brought this to us from her Lutheran tradition.



Myana Clark (above left) sang “O Holy Night” for the introit.



Janet Mecham (center) played Gounod’s “Ave Maria” on her cello at Communion, accompanied by David Jones.

Blake Mecham (right) led the congregation in “Silent Night” on the guitar just like the carol’s original performance in a small Austrian church in 1818.



### CHRISTMAS EVE

The St. George Choir, directed by Lise Clark and accompanied by Janet Mecham, sang “Hark! The Angels Sing on High,” arranged by Philip Kern.

# FISH

The Roseburg Food Project collected over 16,000 pounds in December. Sixty-six neighborhood coordinators and 1097 donors made this possible, as well as the Joseph Lane Middle School students who contributed a thousand pounds.



Photo from The Fish of Roseburg's Facebook page

It's not too early to start shopping for the next collection on Feb 11. And don't forget to bring things for the basket at church!

Below are some of the most-needed items at the Pantry.

## Especially for Seniors

Dried Fruits / Nuts  
Ready Made Pudding / Applesauce  
Ensure Protein Drinks  
Pull-tab Soups  
Single-Serving Meals  
Low-Sodium Crackers  
Tea (regular and decaf)

## Non-Perishable Food

Cereal  
Hearty Soups (and Top Ramen)  
Canned Meat  
Canned Fruit  
Cooking Oil (smaller plastic bottles)  
Canned Tuna  
Canned Beans  
Dried Beans  
Rice  
Soy Milk  
Canned Milk  
Canned Vegetables  
Hamburger Helper  
Rice-a-Roni  
Baby Food/Formula  
Peanut Butter

## Non-Food Items

Toothpaste  
Toilet Paper  
Toothbrushes  
Shampoo (smaller sizes best)  
Soap  
Disposable Diapers

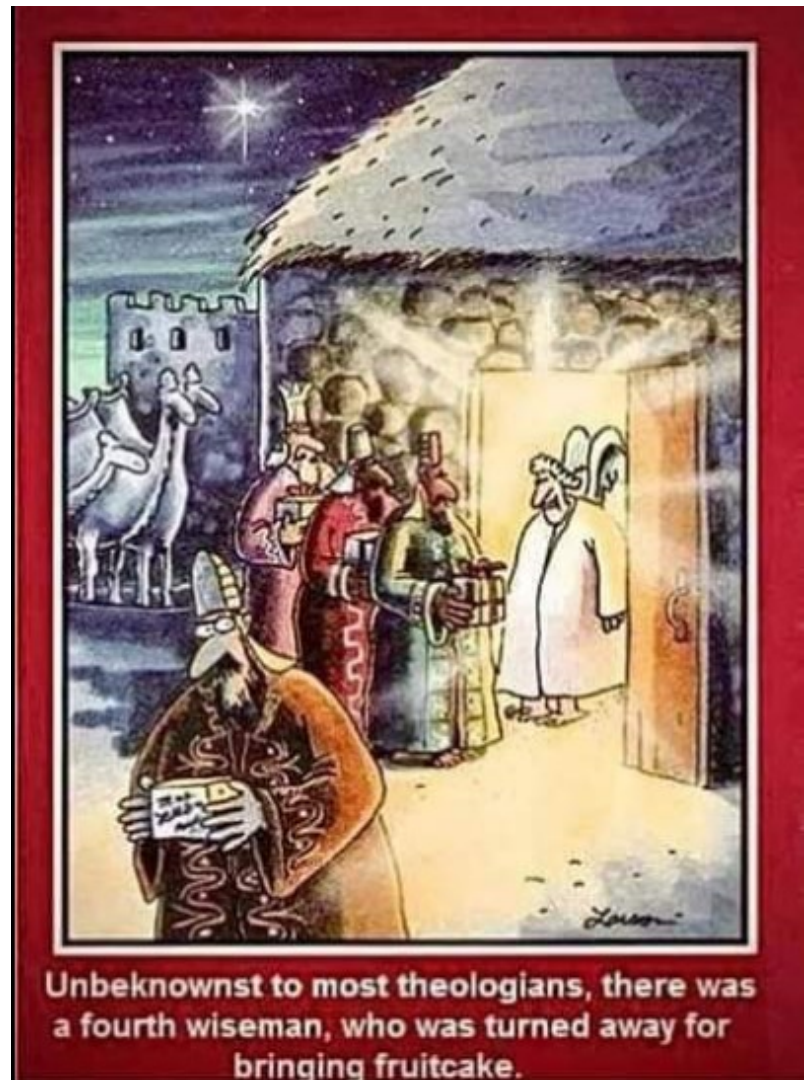
## FISH and DoorDash

DoorDash will now deliver FISH emergency food boxes to your home free of cost.

If you know of someone who is in need and can not get to the FISH pantry, please tell them of this service! Perfect for a new mom (they have baby food and diapers), great for elderly (if they use Meals on Wheels, they can use this service for groceries too), good for someone in recovery from a broken leg or too ill to leave the house. Call 541.672.5242 to get more information.



# Epiphany Fun



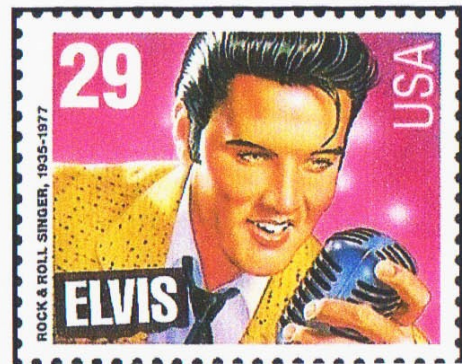
## Stamp Club News



Umpqua Valley Stamp Club presents  
the Stamp Of The Month

January 8<sup>th</sup> is Elvis Presley's Birthday

UVSC honors the King of Rock and Roll  
with the stamp of the month. This  
stamp was issued on January 8<sup>th</sup>, 1993  
as part of the American Music Series.  
It is one of the most popular stamps  
ever issued by the U.S. Postal Service.



Scott catalog #2721

The Umpqua Valley Stamp Club meets monthly every 3rd Monday except for June and December.  
Here in the Parish Hall at 7:15. Visitors welcome.

*Poster by Clarence Adams, Umpqua Valley Stamp Club*

## Inspiration

Some of us have winter souls. We go on the inward journey by an ancient instinct, seeking solitude when light and dark dance more closely than at any other time. There are secrets in the gray clouds and revelations in the cold wind. Hidden deep beneath the snow are memories, reminders of the long path that has brought us this far.

Some of us have winter souls, drawn to deeper thoughts, sitting in a chair by the window, looking out at infinity above the bony-fingered trees.

~ The Rt. Rev. Steven Charleston



St. George Episcopal Church  
1024 S.E. Cass Avenue  
Roseburg, OR. 97470

541-673-4048

stgeorge@saintgeorgesepiscopal.com  
www.saintgeorgesepiscopal.com  
www.facebook.com/episcopalroseburg

Inside This	Issue
Pastoral Letter	2
In Memoriam	3
ECW	4
Parish News	5-8
FISH	9
Humor	10
Stamp Club News	11
Inspiration	11

St. George Episcopal Church publishes **THE DRAGON SCOOP** monthly except for a combined July-August issue.  
If you would like something to be considered for the newsletter please talk to Leigh Van Sickle, Editor—541-391-0814  
E-mailed articles and photographs can be sent to [saintgeorgepix@gmail.com](mailto:saintgeorgepix@gmail.com)

**Priest-in-Charge: The Rev. Gail Duba**  
**Senior Warden: Pete Benham**  
**Co-Junior Wardens:**  
**Bob Spielman and Sue Phelps**  
**Treasurer: Kathy Glockner**

**OFFICE HOURS**  
**10 am—2 pm**  
**Monday through Friday**

**ST. GEORGE WORSHIP**  
**10 am**  
**Sundays**  
**and**  
**Wednesdays**

